

# ORGANISATIONAL CLIMATE CHANGE PLAN SUMMARY

2022-27



SERO NET  
CASNEWYDD  
NET ZERO  
NEWPORT

Mae'r ddogfen hon ar gael yn Gymraeg  
This document is available in Welsh

# What is Climate Change Global Warming?

Climate change encompasses a wide range of changes to our climate, including average temperature and precipitation levels. It includes warming and the “side effects” of warming, for example; melting glaciers, heavier rainstorms, or more frequent drought.

Global warming refers to the Earth’s rising surface temperature which is one symptom of the much larger problem of human-caused climate change.

## What is causing this warming?

As we know, the Earth is surrounded by a thin layer of gases. These gases include both naturally occurring and human-derived “greenhouse gases” (GHG) such as carbon dioxide, methane, water vapour and nitrous oxide.

As solar radiation from the sun reaches the Earth, a proportion of it is absorbed by the GHG and the rest is reflected back into space.

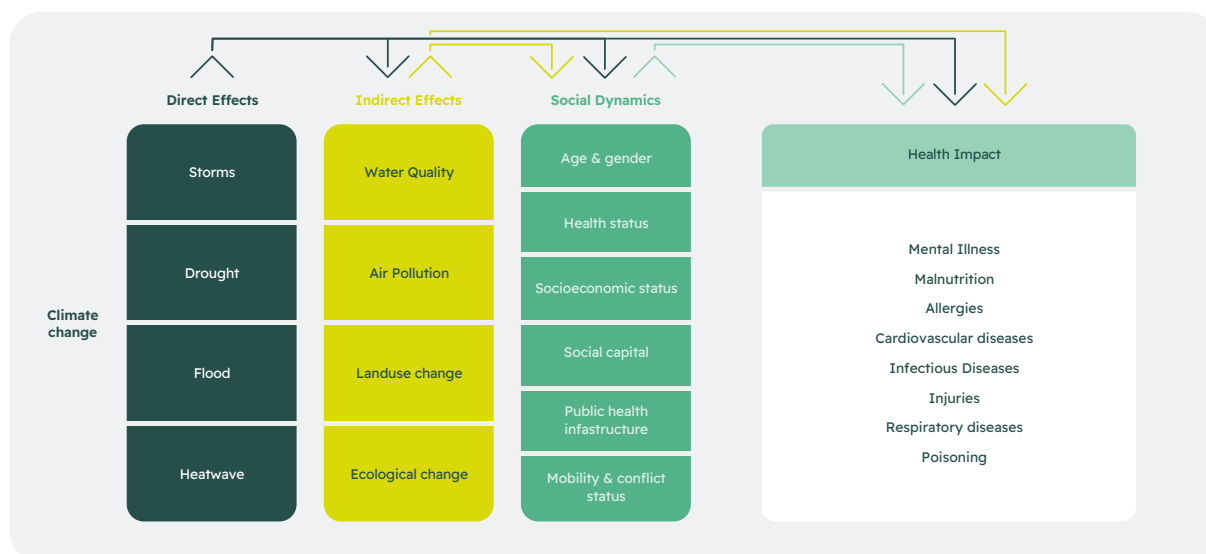
Having the right quantity and balance of greenhouse gases in the atmosphere gives us the temperatures required to live comfortably on our planet. Without any greenhouse gases at all, the average temperature of the Earth would be -18°C.

The rise in the concentration of greenhouse gases in the atmosphere is resulting in too much heat energy being retained, and an increased rate of global warming, resulting in significant changes to our climate.

## What are the Impacts?

There are many direct and indirect effects of global warming and climate change.

Figure i: Climate Change Impacts



Source: Lancet Commission

# Background

---

## Carbon Management Plan

The council's **Carbon Management Plan 2018-22** which was focussed on scope 1 and scope 2 carbon emissions has already started the council's journey to net zero carbon. Carbon emissions reduction have exceeded the targets that were set out in our carbon management plan, which has resulted in a 29% reduction compared to the baseline year that was initially set as 2017/2018.

## Ecological and climate emergency

In November 2021 the council proposed a political motion and declared an Ecological and Climate Emergency.

# Aims of the Plan

---

This is a summary of the Newport City Council Climate Change Plan that sets what we need to do as a council over the next five years to:

- Reach net zero carbon as an organisation by 2030.
- Review the services we provide to ensure they support the city's journey to net zero and adaptation to climate change.



## Key delivery themes

To deliver on this the plan six delivery themes have been identified. These are:

### Theme 1

## Organisational Culture & Leadership



### 2030 Vision

The climate and nature emergency will be at the heart of all our work. In our decisions we will take positive action to minimise climate and ecological impacts. We will lead by example and empower our partners, communities, and individuals to tackle the climate emergency and prioritise nature-based solutions.

### Priorities

#### 1. Behaviours & Role-Modelling

Our elected members and workforce will be encouraged and supported to consider their individual contribution to becoming net zero carbon by 2030, and leaders will role model the Council's expectations.

#### 2. Governance & Performance

Our democratic and corporate functions will be committed to becoming net zero carbon by 2030, and our decision-making, governance framework and performance monitoring will reflect this commitment.

#### 3. Promotion & Engagement

Regularly publicise progress and achievements to embed aspirations to be net zero carbon by 2030.

#### 4. Financial Commitment

To plan for the financial impacts of climate change, and to ensure that our medium to long term financial planning contributes to the delivery of the Council's commitment to reduce carbon emissions where possible.



## Theme 2

## Our Buildings



## 2030 Vision

To achieve net zero carbon energy and support the nature recovery across our buildings by 2030.

Our building emissions as a council are estimated to be 15,231 tonnes of carbon dioxide equivalent (tCO<sub>2</sub>e) which equates to 18.6% of our overall emissions.

This includes the emissions from fuel for heating, electricity, and district heat.

## Priorities

## 1. New Council Buildings

All new building to be net zero carbon.

## 2. Building Retrofitting

Deep retrofit to ensure creating net zero carbon energy buildings.

## 3. Renewable Heat

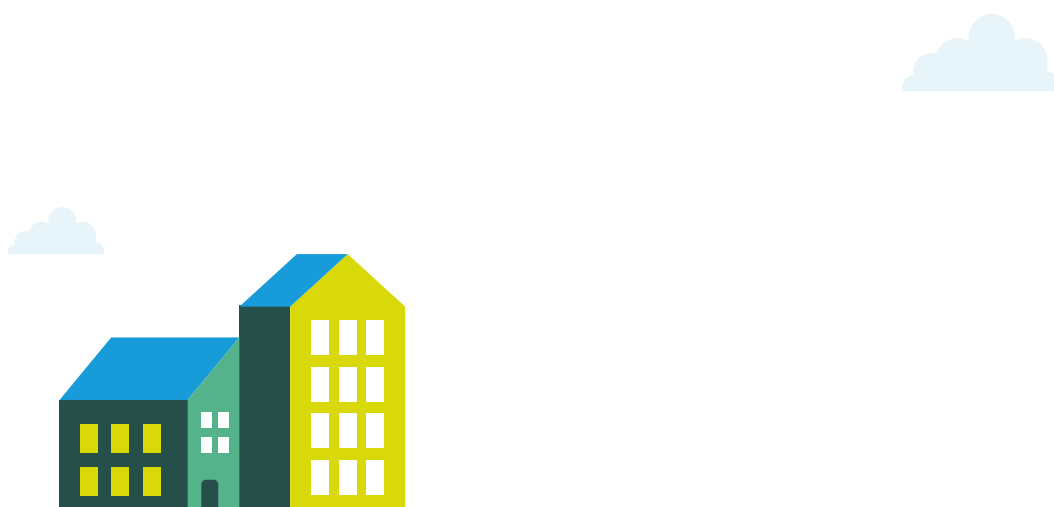
Implementation of renewable heat in new buildings.

## 4. Natural Gas

A commitment to significantly reduce or remove natural gas heating across the buildings.

## 5. Building Rationalisation

Audit current assets to understand their long-term carbon impact with the aim of better strategic utilisation.



Theme 3

# Our Land



## 2030 Vision

A city which sustainably manages and increases its natural resources, protecting, enhancing, improving and connecting the natural environment in a carbon neutral and climate and ecological responsible manner.

Council owned land and woodland is estimated to provide biological carbon storage of 1,041 CO<sub>2</sub>e which equates to an offset of -1.3%.

## Priorities

### 1. Ecosystem Resilience

Sustainably restore, create and connect biodiversity and habitats by improving Council owned land and public realm

### 2. Trees & Woodland

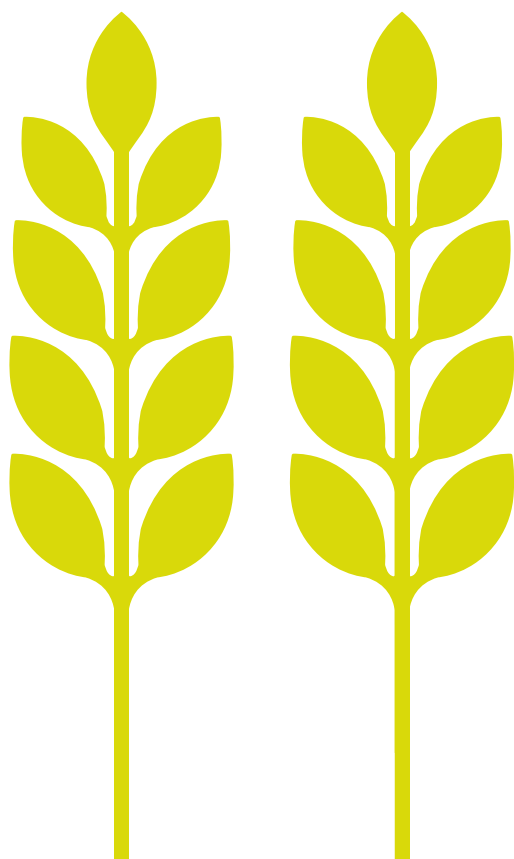
Improve human health, environmental quality, carbon reduction and capture by sustainably managing and increasing Newport's trees and woodland.

### 3. Urban Greenspace

Increase green infrastructure in the urban/public realm to reduce environmental inequalities, for the multiple benefits of nature's recovery, human health and wellbeing, climate adaptation, cooling and flood alleviation, providing carbon reduction and clean air.

### 4. Council Owned Leased Land

Support the nature recovery whilst reducing carbon emissions from Council owned farmland and any other leased land.



**Theme 4****Transport and Mobility****2030 Vision****A city with healthy and sustainable travel choices for the people.**

Our transport emissions as a council are estimated to be 5,603 tCO<sub>2</sub>e which equates to 6.9% of our overall emissions. This includes the emissions from our plant and fleet vehicles, how our staff travel to work and during their working day.

We also have a wider role to play working with our partners across the city to plan and provide an integrated, frequent, low carbon and accessible transport network that is affordable in line with the sustainable travel hierarchy.

**Priorities****1. Business (Grey) Mileage & Staff Commuting**

Reduce carbon emissions from employee commuting and grey mileage by implementing a policy of agile working, active travel and usage of public transport and ultra-low emissions vehicles (ULEVs).

**2. Fleet**

Reduce Council carbon emissions by moving to a ULEV fleet.

**3. Transport Network**

Managing the transport network to enable people to travel in a more sustainable way.

**4. Land Use Planning & Placemaking**

Ensure sustainable transport options are available from the outset in all new developments, including walking, cycling, public transport and electric charging infrastructure

**5. Active Travel**

Reduce carbon emission by prioritising active travel across the city.

**6. Public Transport**

Encourage the use of public transport instead of car usage.

**7. Charging Point Infrastructure**

Increase charging capacity across the city.

**8. Schools**

Reduce carbon emissions from home to school travel.

**9. Taxis**

Implement policies to support the move to a low emission taxi fleet.



**Theme 5****The Goods and Services we Procure****2030 Vision**

Sustainable procurement will be at the heart of ensuring that our external contracting minimises the climate and nature impact and also the carbon footprint of goods, works and services procured.

The emissions from the goods and services that we purchase and our supply chain as a Council are estimated to be 55,168 tCO<sub>2</sub>e which equates to 67.3% of our overall emissions.

**Priorities****1. Measurement**

Gain a good understanding of our estimated tCO<sub>2</sub>e per annum from procured goods and services, and its emissions profile and supplier base.

**2. Guidance, Tools and Training**

Develop guidance, tools and training for the organisation to support staff to reduction of carbon throughout the procurement lifecycle.

**3. Partnership**

Lead by example and work with our procurement strategic partners both public and private to align climate change, carbon reduction and circular economy aspirations.

**4. Engagement**

Incentivise suppliers through proportionate evaluation criteria to proactively seek opportunities to reduce carbon and climate impacts.





## Theme 6

## Our Wider Role



## 2030 Vision

Leading by example and proactively supporting our communities and partners towards society wide action for nature and climate recovery.

The council also has a wider role to play in supporting community wide climate change mitigation and adaptation through the services that we provide.

How we provide our services can support the city's journey to net zero carbon and adaptation to climate change.

Emissions from our waste services are estimated to be 6,908 tCO<sub>2</sub>e which equates to 8.4% of our overall Council's emissions. Reducing waste in the right way will reduce the carbon footprint of the city.

## Priorities

## 1. Placemaking &amp; Building Control

Reduce carbon emissions and support nature recovery by focusing on sustainable, low carbon development, influencing low carbon energy and building resilient communities.

## 2. Energy

Identify and implement the changes needed to the local energy system to decarbonise heat, electricity and local transport and realises local renewable energy production.

## 3. Flooding

Build climate resilience and alleviate flooding across the city using a range of measures including natural flood defences.

## 4. Waste

Build climate resilience and alleviate flooding across the city using a range of measures including natural flood defences.

## 5. Digital

Utilise digital solutions effectively to reduce and monitor carbon emissions.

## 6. Partnerships &amp; Communities

Work collaboratively with partners and communities to promote the climate and nature recovery across the city.





SERO NET  
CASNEWYDD  
NET ZERO  
NEWPORT



**NEWPORT**  
CITY COUNCIL  
CYNGOR DINAS  
**CASNEWYDD**