



# 21st Century Schools Programme

## Regional Welsh-medium Education

*“Formal Consultation to establish a new Welsh-medium secondary school in Newport”*

1st March 2016 - 12th April 2016



A new Welsh-medium secondary school  
(Children and Young People everyday Summary Version)



This document can be made available in Braille. Information can also be made available in other community languages if needed. Please contact us on 01633 656656 to arrange.



This pack is specifically aimed at current Year 6 pupils in Welsh-medium primary schools in Newport and South Monmouthshire.

**The Council are proposing to set up a new Welsh-medium secondary school in Newport.**

### **Why?**

It is important that we make sure there is an equal opportunity for all children to go to a Welsh-medium secondary school if they want to, because:

- We don't have one in Newport or in Monmouthshire
- Very soon there will not be any room at Ysgol Gyfun Gwynllyw (this is the school that pupils from Welsh-medium primary schools mentioned below would have been attending in Year 7)

### **Where?**

Ysgol Gymraeg Bro Teyrnnon opened as Newport's third Welsh-medium primary school in September 2011. It was initially established as a growing school and is currently able to take children from nursery age up to Year Four. In September 2016 there will be two vacant classrooms within the main school building.

It is proposed that a Welsh-medium secondary school is temporarily established on this site for up to two academic years through re-modelling of the current site and additional temporary provision.

The two schools will function entirely separately on their own sites. Both schools will have exclusive use of education classroom curriculum facilities, although the school canteen and dining area will be shared on a timetabled basis.

### **Who will go to the new Welsh-medium secondary school?**

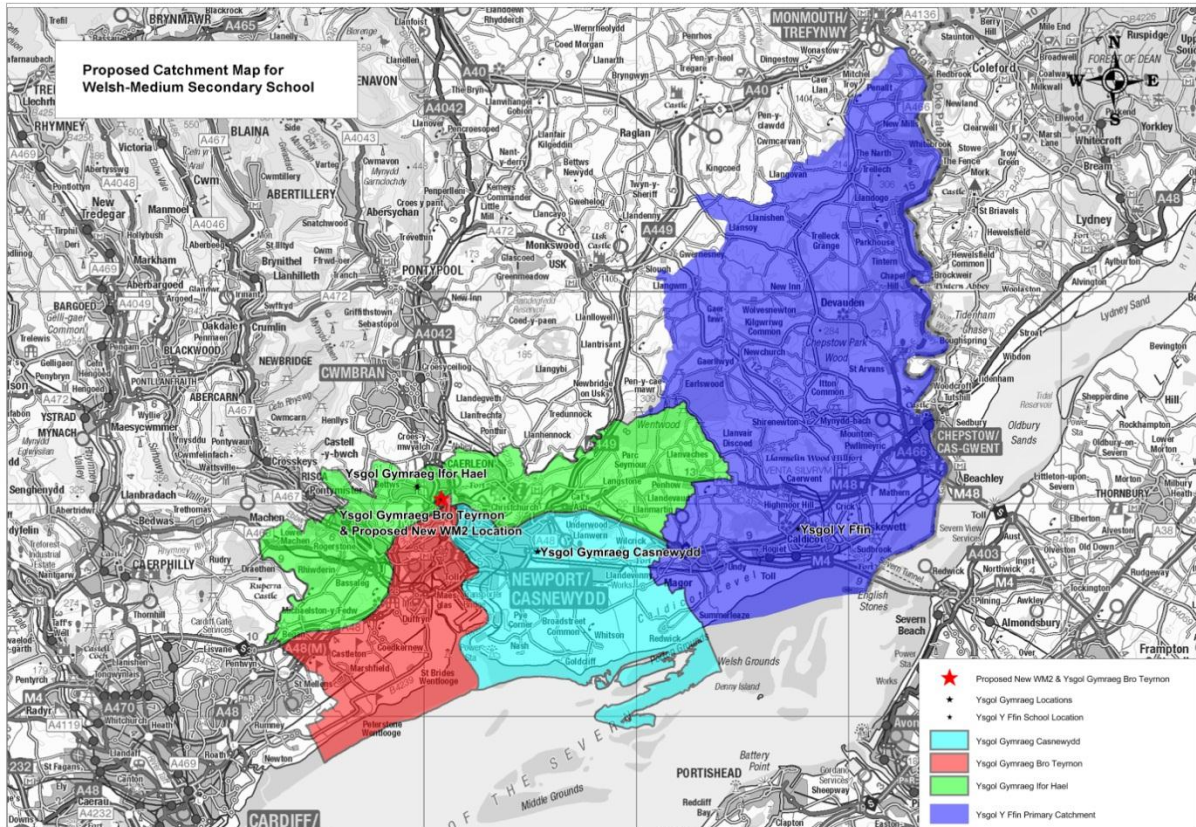
The new Welsh-medium secondary school will start off with about 90 pupils, who are all currently attending the following schools:

- Ysgol Gymraeg Y Ffin, Caldicot
- Ysgol Gymraeg Ifor Hael, Newport
- Ysgol Gymraeg Bro Teyrnnon, Newport
- Ysgol Gymraeg Casnewydd, Newport

The Year 6 pupils at these schools will all enter Year 7 in September 2016 and will be able to attend this new secondary school.

## What will the catchment area look like for the new Welsh-medium secondary?

A map of the proposed catchment area for the new Welsh-medium secondary school is shown below.



## How do you set up a new school?

The school, now named Ysgol Gyfun Gwent Is Coed, already has a temporary Governing Body and a Headteacher elect. The temporary Governing Body and the Headteacher elect will work together to determine a staffing structure, recruitment of those staff and the set up and organisation of the school in readiness for September 2016. This will include hosting meetings for parents and families and arranging transition events so that all children are appropriately supported through this process.

Initially there will be a small number of staff to take care of about 90 pupils. As the school grows, and the number of pupils increases, so will the number of staff.

The following table shows how the school could grow:

	Sept 2016	Sept 2017	Sept 2018	Sept 2019	Sept 2020
Year 7	88	97	100	118	118
Year 8		88	97	100	118
Year 9			88	97	100
Year 10				88	97
Year 11					88
Year 12					
Year 13					
	88	185	285	403	521

It will not fill up completely for about 7 years.

#### **Why have you chosen Ysgol Gymraeg Bro Teyrnnon as the temporary site?**

We have chosen this location because:

- We were looking for a space to set up a temporary school site for potentially up to 210 pupils in the second year
- Ysgol Gymraeg Bro Teyrnnon is a large school site with green soft play spaces
- As the school is a growing school, there are currently a number of vacant classrooms and there is sufficient space on the site to increase the school in the second year
- The site already provides Welsh-medium education
- All pupils joining Year 7 in September 2016 and September 2017 will start at a “new” school as there are currently no Year 5 or Year 6 pupils at Ysgol Gymraeg Bro Teyrnnon

#### **Will two schools on the same site be difficult for Ysgol Gymraeg Bro Teyrnnon?**

No, there is plenty of room on site for two separate schools:

- Ysgol Gymraeg Bro Teyrnnon pupils will not lose any facilities
- They will continue to enjoy the same school experience during the school day that they have at the moment
- Breaktimes and lunchtimes will be arranged at entirely separate times for the pupils attending each school setting
- The school team has had previous experience of sharing a site with another school, and in addition is currently home to Maes Ebbw – Brynglas ASD in an annexe from the main building

**Will it be confusing at home time with all the buses for two different schools?**

All school bus drivers will have instructions to park in a certain area for each school. Buses for the Welsh-medium secondary school will drop-off and pick-up from a nearby turning circle and will not drive up to the school.

**What will the whole site look like with two schools?**

The Ysgol Gymraeg Bro Teyrnnon site is a suitable and sufficient education environment for pupils on both the primary and secondary sectors. Arrangements are still being discussed however, and as and when things are confirmed, we will let you all know.

**Will I be able to have school meals?**

Yes, it is important to know that whilst the same dining hall will be used for the two schools, lunchtimes will be separate.

For pupils joining the new Welsh-medium secondary school, the type of school meals that you currently enjoy at Welsh-medium primary school will be provided in your new Welsh-medium secondary school dining hall. The menu will be in Welsh.

**Will there be any 'transition day' visits to the new Welsh-medium secondary school?**

Yes, your Headteachers at each of the four Welsh-medium primary schools will all work together to arrange 'transition days' to give you each a chance to visit your new school, to have a look around and meet the new teachers.

**Will there be after school clubs at the new school?**

Yes, the school will set up after school clubs, and the Headteacher will decide on those arrangements.

**Have your say!**

You are now able to make any comments on this proposal.

Arrangements will be made to contact the pupil / student councils in all of your schools.

You have until midnight on the 12<sup>th</sup> April 2016 to tell us what you think about the proposal.

## **Consultation Response Pro-Forma – Welsh-medium secondary school**

Your views matter. Please tell us what you think about the proposal by completing this questionnaire and returning it to the Education Service Development Manager, Newport City Council, Room 425W, Civic Centre, Newport NP20 4UR.

Alternatively you can complete and submit this form online through the Council's School Reorganisation web page at [www.newport.gov.uk/wm2](http://www.newport.gov.uk/wm2) or send comments by email to [school.reorg@newport.gov.uk](mailto:school.reorg@newport.gov.uk)

**The closing date for the submission of responses to this consultation is midnight on Tuesday 12<sup>th</sup> April 2016.**

Please note that responses made to this consultation will not be counted as objections to the proposal, they will be recorded as adverse comments. Objections can only be registered following the publication of a statutory notice.

**Do you support the proposal to establish a new Welsh-medium secondary school in Newport at a temporary location on the site of the current Ysgol Gymraeg Bro Teyrnnon?**

Yes

No

**Please use the box below to give any reasons or comments.**

Please indicate who you are (e.g. parent/carer of a pupil at an affected school)

---

If you wish to be notified of the publication of the consultation report, please supply your contact details:

E-mail: \_\_\_\_\_

Postal address: \_\_\_\_\_