



2023/24

Opportunities for all adults from age 16



Contents

Introduction	3
Venue Guide & Course Fees	4
Course Information	5
➤ Essential Skills & GCSES	5-6
● Literacy	
Essential Skills	
Pre-GCSE English	
GCSE English Language	
● Numeracy	
Essential Skills	
Pre-GCSE Maths	
GCSE Maths	
➤ Languages	7
Introduction to British Sign Language	
British Sign Language - Improvers	
Holiday Spanish	
ESOL	
➤ Digital	8
Computers Don't Bite	
Digital Skills	
ICDL	
➤ Independent Living Skills	9
➤ Other	9
● Introduction to Carbon Literacy	
● Becoming a Teaching Assistant	
● Highfield Level 2 Award in Food Hygiene	
● Highfield Level 2 Award in Introduction to First Aid for Mental Health	

Welcome to the Newport Adult Community Learning Brochure 2023-24

As a member of the Gwent Adult Community Learning Partnership, Newport Adult Community Learning offers a wide variety of courses for all adults over the age of 16. We have courses to suit everyone whether you're looking for qualifications, employment opportunities or to reach personal goals.

If you are new to the service, we hope you will find a course that helps and interests you and if you are returning, we look forward to seeing you again.

This brochure provides information on the range of courses on offer.

To enquire about or to enrol on a course, please contact us via:



E-Mail: community.learning@newport.gov.uk



Telephone: 01633 656656



Web: www.newport.gov.uk/communitylearning

You can also visit us at:



St. Julian's Community Learning & Library Centre

Beaufort Road

Newport

NP19 7UB



Newport
Adult Community Learning
Dysgu Cymunedol i Oedolion
Casnewydd

Venue

Courses are taught at venues across Newport

Venue	Address
St Julian's CLLC	Beaufort Road, Newport, NP19 7UB
Share Centre	Stow Hill, Newport, NP20 4DW
Tredegear House	Coedkernew, Newport, NP10 8YW
West Neighbourhood Hub	Bideford Road, Newport, NP20 3XT

Course Fees

For the latest course fees, please visit our webpage www.newport.gov.uk/communitylearning or refer to the course information insert.

For 2023/24, all essential skills, most ESOL and most computer courses are free of charge.

Concessionary fees apply to students in receipt of ESA, JSA, Income Support, Working Tax Credit, Guaranteed Pension Credit or Universal Credit. Proof of entitlement must be shown when enrolling.

Students aged over 16 and under 19 on 1 September 2023 will be entitled to claim the 16-19 concessionary rate.

General Information

Refunds

Newport City Council reserves the right to cancel or amalgamate courses. If this is necessary, a full or partial refund may be given. Refunds are not made for any other reason.

Disability

Please let us know, prior to enrolling, if you have a disability which may affect participation in your chosen course, so that we can accommodate your needs.



Course Information

► Essential Skills and GCSEs

Essential skills courses are perfect for beginners and for those wishing to brush up their skills in both literacy and numeracy.

Courses for more experienced learners wishing to improve their career prospects are also available, as well as GCSE courses for those wishing to attain a nationally recognised qualification.

We offer friendly and supportive classes, so why not come along to develop your skills and gain new ones.

All of our courses are accredited and we'll help you achieve a qualification.

LITERACY

Essential Skills - Literacy

These courses are designed for those taking their first steps back into education and for those wishing to improve their literacy skills.

All Essential Skills Literacy courses are free of charge and can be joined at any time during the academic year.

Pre-GCSE English

Pre-GCSE English courses offer students the opportunity to develop the skills required for GCSE English without the pressure of formal examinations.

All Pre-GCSE courses are free of charge and can be joined at any time during the academic year.

GCSE English Language

GCSE courses are enjoyable, challenging and rewarding and offer a valuable qualification for self-development, improving employment prospects and access to higher education.

This course requires a commitment to homework, self-study, classroom-based assessments and end of year written examinations.

You will receive excellent teaching, support, feedback and encouragement throughout the course. Tuition is free of charge – students will only need to pay the examination fee.

Some sessions may be taught online - students will need access to a digital device with a webcam and microphone and a reliable internet connection.

NUMERACY

Essential Skills – Numeracy

These courses are designed for those taking their first steps back into education and for those wishing to improve their numeracy skills.

All Essential Skills Numeracy courses are free of charge and can be joined at any time during the academic year.

Pre-GCSE Maths

Pre-GCSE Maths courses offer students the opportunity to develop the skills required for GCSE Maths without the pressure of formal examinations.

All pre-GCSE courses are free of charge and can be joined at any time during the academic year.

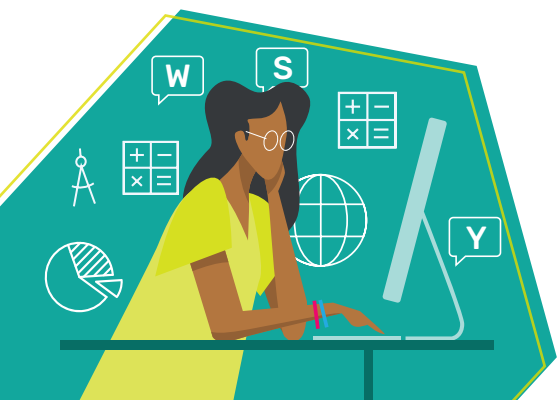
GCSE Maths

GCSE courses are enjoyable, challenging and rewarding and offer a valuable qualification for self-development, improving employment prospects and access to higher education.

This course requires a commitment to homework, self-study, classroom-based assessments and end of year written examinations.

You will receive excellent teaching, support, feedback and encouragement throughout the course. For 2023-24, all GCSE Maths courses will be free of charge.

Some sessions may be taught online – students will need access to a digital device with a webcam and microphone and a reliable internet connection.



► Languages

Introduction to British Sign Language

This course will help you learn about British Sign Language (BSL) and how it differs from other sign language.

Students will be taught the sign language alphabet and other signs - helping you to communicate more effectively.

By the end of the course students will be able to hold a basic conversation in BSL and begin to understand the issues that a hearing-impaired person may encounter.

Some sessions may take place online. Students will require access to a digital device with a camera and microphone, plus a reliable internet connection.

British Sign Language - Improvers

Our British Sign Language - Improvers course is for students who have completed an Introduction to BSL course and wish to develop their skills.

Some sessions may take place online. Students will require access to a digital device with a camera and microphone, plus a reliable internet connection.

Holiday Spanish

Our popular Holiday Spanish courses are improved for 2023/24.

Our Beginners course will teach you the basic vocabulary required to enhance your Spanish holiday, including simple greetings, how to ask for directions and how to order food and drink.

New for 2023/24, our Spanish for improvers course will build on the knowledge gained in the Spanish for beginners course.

ESOL – English for Speakers of Other Languages

Subject to eligibility, we welcome all adults whose first language is not English.

ESOL classes are taught at venues in and around the city centre. We offer courses ranging from absolute beginners to more advanced Level 1 courses.

Our classes take place in a supportive environment and are designed to help with all aspects of life and work in the UK.

To arrange an assessment, please contact REACH Newport.



Our ESOL REACH+ Hub provides a central point of contact for anyone wishing to access English classes in different venues across Newport.

We assess each person and refer to the best course and support. We aim to get everyone on to the right course as quickly and easily as possible.

You will need to book an appointment online at www.reach.wales or by telephoning

07805 272916

Come to that appointment and have an assessment with one of our helpful staff.

This takes about 2 hours and includes:

- a short interview to test your listening and speaking skills
- a reading and writing task

We will then advise you of the right level ESOL course for you and let you know when and where it starts

► **Computer courses**

Computer courses are available for students at different levels - from beginners to intermediate.

For the complete beginner we will show you how to switch your computer on, build your confidence and teach you the basics of using a personal computer.

We also offer digital skills courses to show you how to stay safe online, how to search and find information on the internet and how to be creative using your computer or laptop.



Computers Don't Bite

From switching on the computer, to printing out your first document, all will soon become clear in this fun course designed to build confidence and an understanding of using a personal computer or laptop. The course provides an introduction to word processing and learning how to search the internet. All Computers Don't Bite courses are free of charge.

Digital Skills

New for 2023/24, our digital skills courses can show you how to stay safe online, how to search and find information on the internet, how to be creative using your computer or laptop and how to use word processing and spreadsheet packages.

All digital skills courses are free-of-charge and can be joined at any time during the academic year.

ICDL

If you're looking for courses to improve your job prospects, ICDL Level 1 and Level 2 courses are recommended and endorsed by employers.

Both courses are fully accredited by the Chartered Institute for IT and include word processing, spreadsheet and presentation modules.

Fast-Track courses are also available and consist of longer lessons over a shorter period.

► Independent Living Skills

Independent Living Skills (ILS) courses are designed for adults with learning difficulties.

Newport Adult Community Learning offers a wide range of courses at St. Julian's Community Learning and Library Centre and Tredegar House.

For more information, and to discuss eligibility for these courses, please e-mail community.learning@newport.gov.uk or telephone (01633) 656656 and ask for St. Julian's Community Learning and Library Centre.

► Other courses

Introduction to Carbon Literacy

Our Introduction to Carbon Literacy courses will help you understand your carbon footprint and show you the steps you can take to reduce your impact on the planet.

Some sessions may be taught online. To take part in an online course students will require access to a digital device with a camera and microphone, plus a reliable internet connection.

Becoming a Teaching Assistant

This course supports students studying the theory as well as the practical elements of working as a teaching and learning assistant within an education setting.

Students will participate in group discussion, undertake both written and practical tasks and draw upon their own experiences, sharing ideas and good practice with their fellow students.

If you are looking towards gaining a job as a teaching and learning assistant, you need to achieve the Level 2 Certificate in Supporting Teaching & Learning in Schools.

You can do this on our courses either by attending twice a week for one year or by attending once a week over two years. Students will need to find a placement in a school as part of the Level 2 certificate course.

If you just want to gain knowledge of the theory behind working in an education setting, the Level 2 Award in Support Work in Schools is the course for you.

If you have a GCSE English language qualification at Grade C or above, you will not be required to take an initial assessment before starting the course. If you don't have a GCSE English language qualification at Grade C or above, we'll require you to take a short pre-course assessment.

Some sessions will be taught online – students will need access to a digital device with a webcam and microphone and a reliable internet connection.

Food Safety

New for 2023/24, the Highfield Level 2 Award in Food Safety for Catering is an intensive one-day course which will ensure that students have the necessary knowledge and skills to understand the principles of cleanliness and hygiene as well as keeping food products safe.

First Aid for Mental Health

New for 2023/24, the Highfield Level 2 Award in Introduction to First Aid for Mental Health will enable learners to develop the skills needed to assist with mental health issues in the workplace and to provide basic mental health support or to be the first response to someone in need.

Notes

[illegible]

Notes

[illegible]