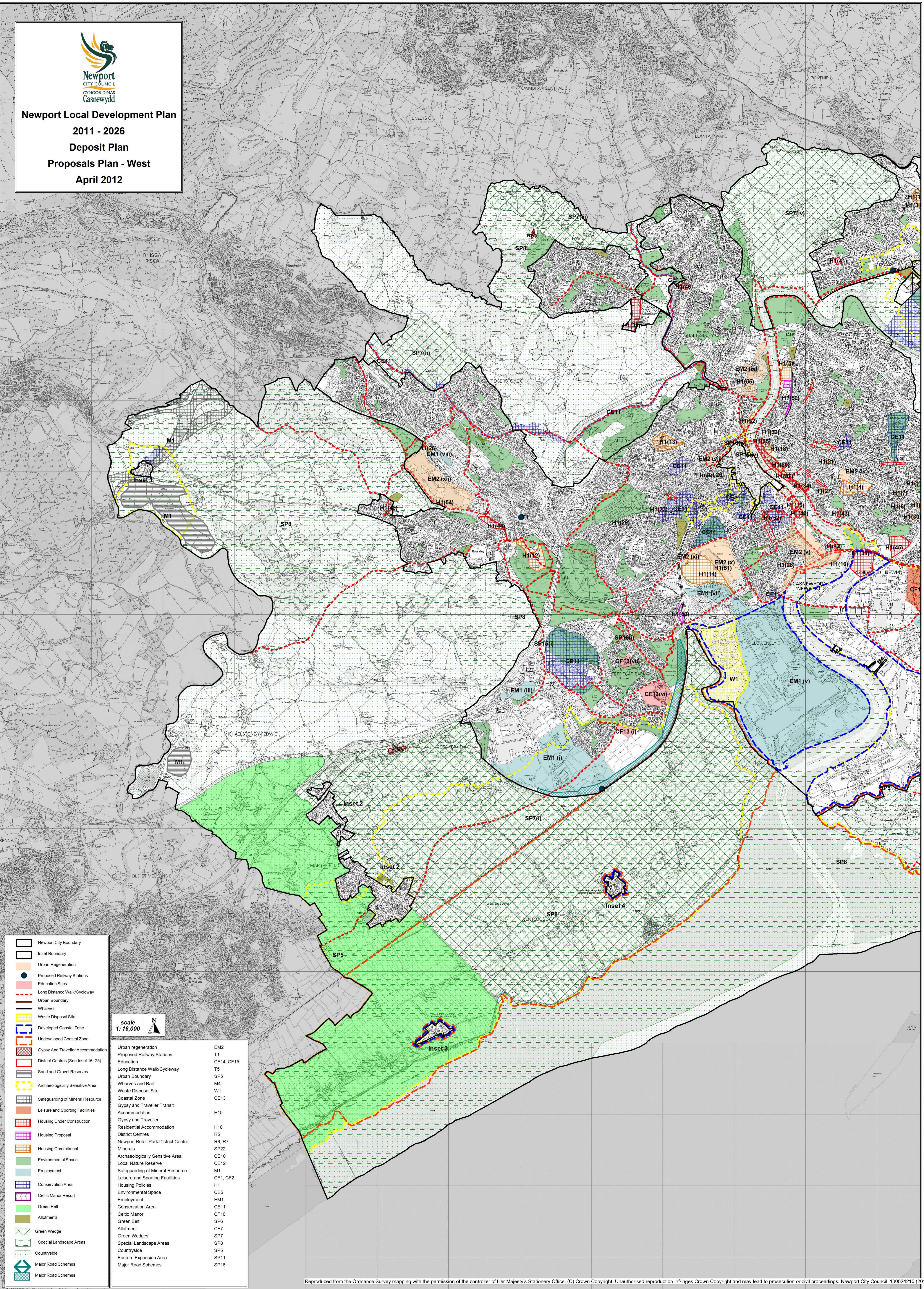




**Newport Local Development Plan
2011 - 2026
Deposit Plan
Proposals Plan - West
April 2012**



- Newport City Boundary
- Inset Boundary
- Urban Regeneration
- Proposed Railway Stations
- Education Sites
- Long Distance Walk/Cycleway
- Urban Boundary
- Wharves
- Waste Disposal Site
- Developed Coastal Zone
- Undeveloped Coastal Zone
- Gypsy And Traveller Accommodation
- District Centres (See Inset 16-25)
- Sand and Gravel Reserves
- Archaeologically Sensitive Area
- Safeguarding of Mineral Resource
- Leisure and Sporting Facilities
- Housing Under Construction
- Housing Proposal
- Housing Commitment
- Environmental Space
- Employment
- Conservation Area
- Celtic Manor Resort
- Green Belt
- Allotments
- Green Wedge
- Special Landscape Areas
- Countryside
- Major Road Schemes
- Major Road Schemes

scale 1:16,000

Urban regeneration	EM2
Proposed Railway Stations	T1
Education	CF14, CF15
Long Distance Walk/Cycleway	T5
Urban Boundary	SP5
Wharves and Rail	M4
Waste Disposal Site	W1
Coastal Zone	CE13
Gypsy and Traveller Transit Accommodation	H15
Gypsy and Traveller Residential Accommodation	H16
District Centres	R5
Newport Retail Park District Centre	R6, R7
Minerals	SP22
Archaeologically Sensitive Area	CE10
Local Nature Reserve	CE12
Safeguarding of Mineral Resource	M1
Leisure and Sporting Facilities	CF1, CF2
Housing Policies	H1
Environmental Space	CE5
Conservation Area	EM1
Celtic Manor	CF10
Green Belt	SP6
Allotment	CF7
Green Wedges	SP7
Special Landscape Areas	SP8
Countryside	SP5
Eastern Expansion Area	SP11
Major Road Schemes	SP16

Reproduced from the Ordnance Survey mapping with the permission of the controller of Her Majesty's Stationery Office. (C) Crown Copyright. Unauthorised reproduction infringes Crown Copyright and may lead to prosecution or civil proceedings. Newport City Council 100024210 (2012)