

# One Newport Partnership Local Action Plan

## Consultation Draft

One Newport is a partnership of the main public agencies in Newport including Newport City Council, Aneurin Bevan University Health Board, Gwent Police, Natural Resources Wales and also key local organisations like Newport City Homes and Gwent Association of Voluntary Organisations.

One Newport has been working on a new Local Action Plan which will cover the important work that needs close cooperation and joint working between these organisations. The day-to-day business of these organisations isn't included in this plan e.g. repairing roads, carrying out surgery, detecting crime etc, as they know this is something they will be doing. Instead, this plan is about the extra things we need to focus on to make Newport a better place now and also for future generations. This means some of this work may take some years to make a real difference, but we will need to make a start soon, for instance by preventing health and social problems, or making sure people have the skills employers will need in coming years.

Recently a new [Gwent Public Services Board \(PSB\)](#) was set up to improve partnership working in the region. One Newport's local action plan intends to help achieve the [Gwent PSB's Well-being Plan](#) ambitions but will also make sure that Newport's unique issues get the attention they deserve.

In this consultation, we have identified the key themes and actions for partnership working in Newport and we now want to know what you think of our draft Local Action Plan. This will give us important feedback so we can start to work on the detail of what we should be doing.

## Gwent Well-being Plan

### Well-being Objectives

We want to create a fairer, more equitable and inclusive Gwent for all.

We want a climate-ready Gwent, where our environment is valued and protected, benefiting our well-being now and for future generations.

### Steps to achieve the objectives

Take action to reduce the cost of living crisis in the longer term.

Provide and enable the supply of good quality, affordable, appropriate homes.

Take action to reduce our carbon emissions, help Gwent adapt to climate change, and protect and restore our natural environment.

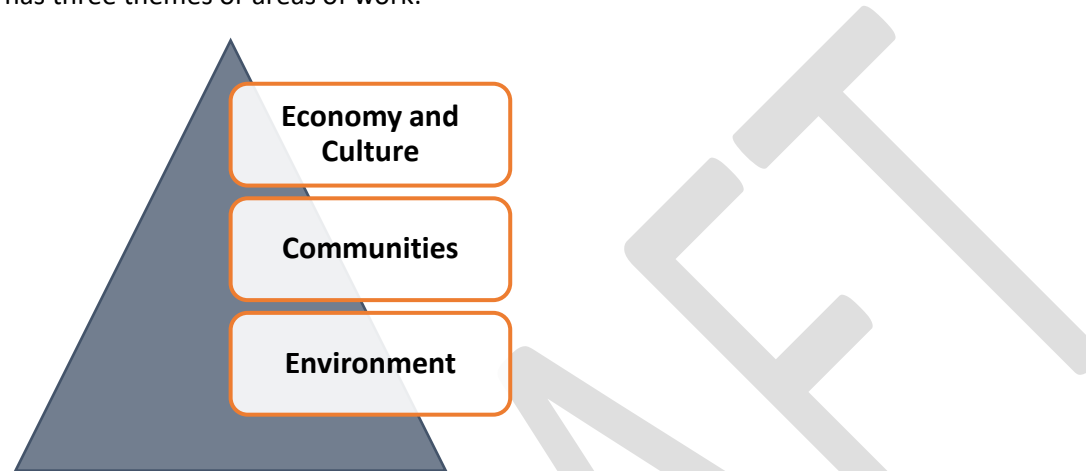
Take action to address inequities, particularly in relation to health, through the framework of the **Marmot Principles\***.

Enable and support people, neighbourhoods, and communities to be resilient, connected, thriving and safe.

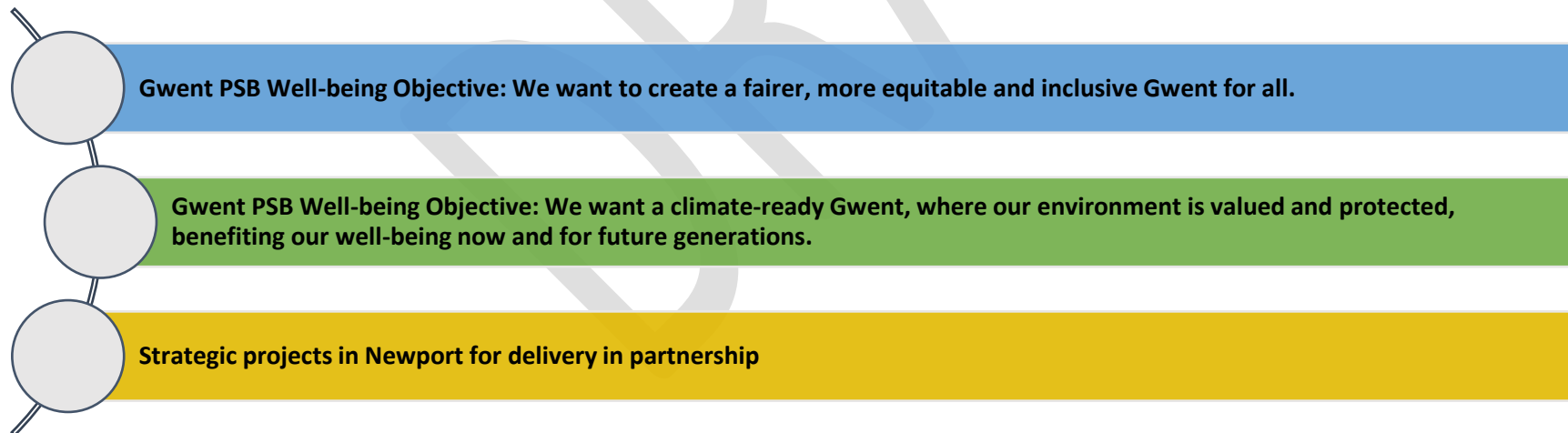
\*The Marmot Principles can be viewed on the [Gwent Public Services \(PSB\) Website](#).

## Draft Newport Local Action Plan - Themes

Our draft local action plan has three themes or areas of work:



The colour coding below shows how the actions under the themes link to the two Gwent Well-being Plan Objectives, or is other local, strategic work in Newport that would best be delivered in partnership.



## Draft Theme – Economy and Culture

### **Ensure opportunities are available and promoted for people at all stages of their lives to develop and enhance their education and skills.**

- Note: This means partners working together to help children, young people and adults develop their skills and knowledge so that they can achieve their potential, find the right employment, and support the well-being of themselves and others.

### **Promote fair work and help people out of poverty, including leading Newport to become a Living Wage City.**

- Note: Fair work means workers are fairly rewarded, heard and represented, and can progress in a secure, healthy, and inclusive working environment. In a Living Wage City, communities and businesses work together to tackle low pay.

### **Develop community wealth building projects to retain spend within the local economy.**

- Note: Community wealth building” could help make Newport’s economy stronger, benefiting local people. An example is when an organisation buys its goods and services from a local business, rather than a supplier from further away. This can help the local business grow and create jobs, which gives people more money to spend, potentially in local shops and restaurants.

### **Collaborate with and provide direction to the Business in The Community Place Programme in Newport.**

- Note: Business in the Community (BITC) and its network of businesses are focused on growing responsible business practices, for greater social and environmental impact. Its Place Programme is about bringing everyone together in a place to act on a common agreement of the challenges, opportunities and solutions, drawing on the strengths of everyone in that community.

### **Support revitalisation of the city centre for families, businesses, and visitors through a City Centre Masterplan and collaboration with Newport Now Business Improvement District.**

- Note: A masterplan would identify priority projects for investment in the city centre that would make a positive difference for people living, working, and visiting there. The Newport Now Business Improvement District oversees the marketing and management of the city centre, representing city centre businesses.

### **Develop and deliver a Sports Strategy for Newport, which strengthens our role as a city of elite sport, and encourages and increases participation.**

- Note: Participation in sport and physical activity is known to improve physical and mental health, and quality of life for many. A shared strategy would increase opportunities for people to enjoy and participate in sport, as well as attracting people to Newport for sports events, which would support the local economy.

### **Support delivery of a strategy celebrating Newport's culture, diversity, and heritage, and promoting participation for well-being.**

- Note: Participation in the arts – theatre, cinema, art, music etc – is known to improve well-being and quality of life for many. A shared strategy would build on and promote Newport’s wide-ranging arts-based groups and facilities, important historic attractions, multi-cultural population, and talented creative people - helping people take part, and supporting social connections and enjoyment of life in the city.

### **Enable and promote a diverse events programme that brings communities together and raise the city's profile, generating social and economic benefits.**

- Note: A wide programme of events would help celebrate the strengths of Newport people and their communities, increase the quality of life and vibrancy of the city, and attract visitors which would benefit local businesses.

## Draft Theme – Communities

### **Increase volunteering opportunities and empower residents to make their communities stronger and more resilient.**

- Note: This could involve building on participatory budgeting work already undertaken in Newport, which allows residents to decide on how public money is spent, to benefit communities, improving the support One Newport gives to the voluntary and charity sectors, and increasing the involvement and participation of residents in community development work .

### **Develop an integrated approach to tackling poverty and inequality.**

- Note: This is about partners working together and involving communities to improve wellbeing. Exmaples would be working together to address the cost-of-living crisis, adoping common approaches across the agencies who support children and families and putting in place area-based programmes in our most disadvantaged communities building on work in Pillgwenlly and Ringland.

### **Promote and support Newport's Integrated and Wellbeing Networks (IWNs) in connecting and enhancing community assets.**

- Note: IWNs are multi-agency and multi-sector partnerships that work together to tackle issues in disadvantaged areas, including addressing health inequalities. We will build on the IWN's in place in Pillgwenlly and Ringland and look to expand this approach to more areas.

### **Tackle and prevent homelessness through collaborative strategies and plans.**

- Note: We will look to intervene early to prevent homelessness and treat homelessness as a joint public services matter – rather than just a housing issue. It would involve services 'placing the individual at the centre' and recognising that people at risk of homelessness may have experienced trauma in their lives.

### **Oversee implementation of the Pill Masterplan to enhance the physical, community and economic environment. Use this learning in other communities.**

- Note: The Pill Masterplan is a multi-agency, approach focussing on Pill. It follows much community engagement which means that the Masterplan will focus on what matters most to local people. Lessons Learned in Pill will be applied in other areas of Newport.

### **Promote sustainable and affordable food provision.**

- Note: This could include mapping food access and using One Newport partner procurement to support sustainable, affordable, food provision. Where possible we will support local food provision (recognising that Newport is not a major food producing area), which would also contribute to the community wealth building work in our Economy and Culture theme.

### **Support the work of Safer Newport to promote a more cohesive city.**

- Note: Safer Newport is the city's community safety partnership, concentrating on local community safety issues including antisocial behaviour serious and organised crime and local neighbourhood issues.

## Draft Theme – Environment

### **Protect and enhance our green spaces and waterways for nature and people.**

- Note: Accessible and high-quality urban green and blue spaces, such as parks, urban forests, tree-lined streets, allotments, riverbanks and coastlines, provide significant mental and physical health benefits to local communities and also help to lessen the effects of air and noise pollution. Green and blue spaces provide crucial habitats for wildlife and contribute towards a healthy and thriving ecosystem. We will ensure that our green and blue spaces, including our nature reserves, are protected and enhanced for both local communities and wildlife.

### **Promote sustainable and active Travel as the preferred modes of transport in the City.**

- Note: Active travel covers any form of human-powered transportation, such as walking, cycling, or scooting, instead of using a car or other vehicle. To encourage active travel around the city we will continue to develop new routes and upgrade existing ones (to make them safer and more accessible) to link up existing active travel routes. We will also work together to encourage more sustainable travel using public transport.

### **Tackle the climate and nature emergency, through climate action and protecting and enhancing biodiversity.**

- Note: The climate and nature emergency refers to the crisis we are facing due to the significant and harmful changes occurring in our climate and natural environment. Biodiversity is the variety of living things on Earth, from bacteria to animals and plants, and the different environments they live in. We will work in partnership to address the climate and nature emergency and minimise our contributions to climate change.

### **Deliver climate change mitigation through our built environment: Public Sector Estate // Housing // Connected Green Infrastructure.**

- Note: The built environment, including buildings and housing, is responsible for a significant amount of the greenhouse gas emissions that cause climate change. By making changes to the way we design and use buildings and housing, such as increasing energy efficiency and using renewable energy sources, we can reduce these emissions and help to address climate change. Green infrastructure refers to a connected network of natural and semi-natural features such as parks, rain gardens and green roofs, that provide multiple benefits to people and the environment, such as biodiversity conservation, flood control, air purification, and recreational opportunities.

### **Develop strategies to address flood risk.**

- Note: Newport is located at the meeting point of the River Usk and the Bristol Channel, which makes it vulnerable to flooding from both river and coastal sources. We will work together to lessen the risks from flooding.

### **Promote the Circular Economy as a method of minimising the impacts of production and consumption.**

- Note: The circular economy aims to keep resources in use for as long as possible by designing products and systems that can be reused and recycled, reducing waste and pollution. We will work to promote the principles of the green economy in all the work that we do.

## Consultation Questions

### Questions for each theme

- To what extent do you think this theme will improve well-being in Newport?  
Fully / Partly / Not at all / Don't know
- Do you have comments on any of the particular actions listed in this theme?
- We want to involve local people and organisations in making Newport a better place to live. What could you, or other people, do to contribute to this theme?
- Would you make any changes to this theme?

### Questions on the overall draft plan

- Thinking about all the themes and actions together, to what extent do you agree with this plan?  
Fully / Partly / Not at all / Don't know
- Are there important things we have missed in this plan?
- Do you think this Local Action Plan will contribute to the Gwent Well-being Plan?  
Fully / Partly / Not at all / Don't know
- Do you have any further comments on this plan?

## Consultation Details

To provide feedback on the draft action plan, please [complete the online survey](#).

For more information on One Newport and the Local Area Action Plan email [one.newport@newport.gov.uk](mailto:one.newport@newport.gov.uk).