

Formal Consultation - Proposal to establish nursery provision at Marshfield Primary School

9 September to 29 October 2015

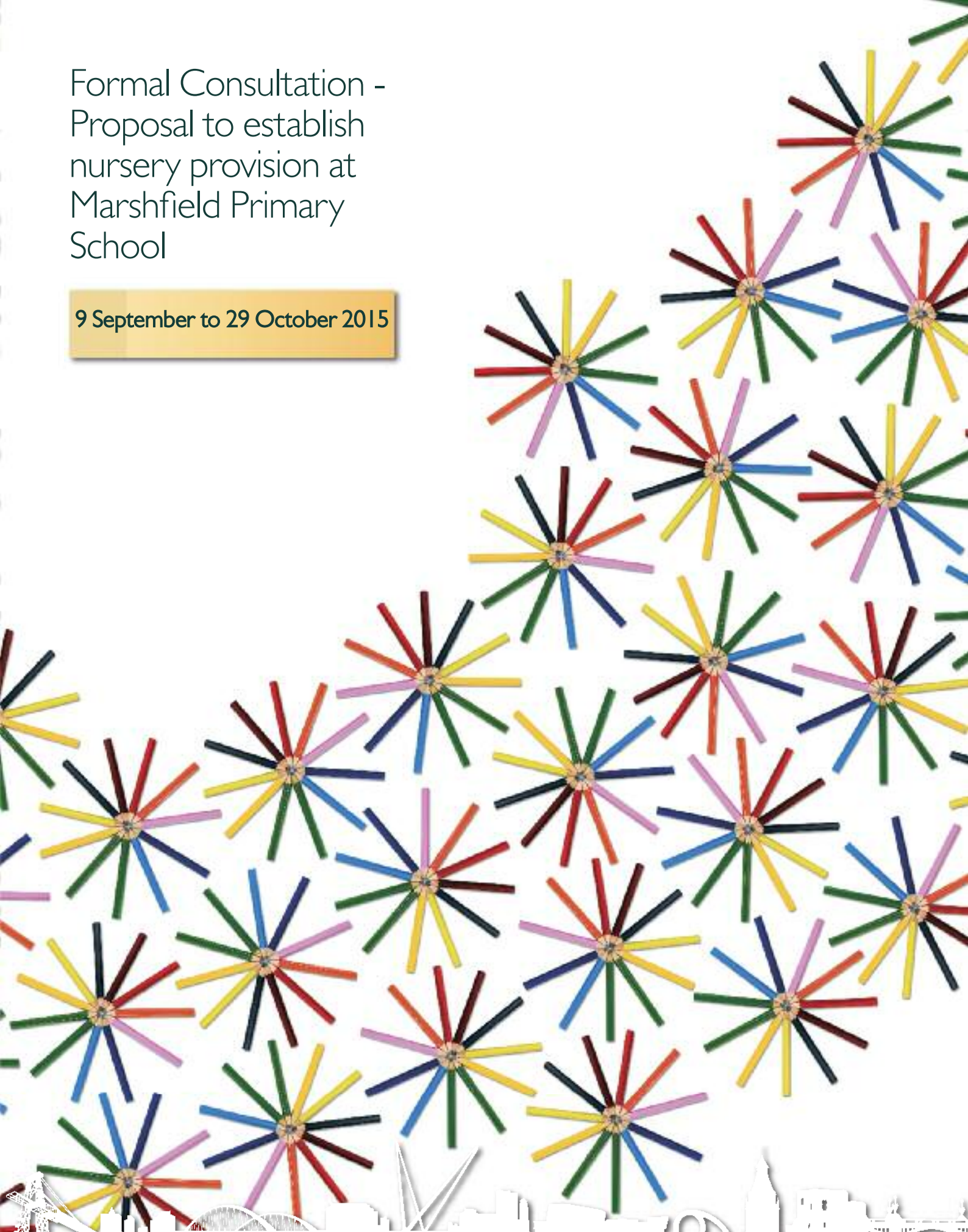


Table of Contents

Introduction	1
How do you make your views known?	2
The proposal	3
About Marshfield Primary School	4
Indicative plan	5
Current nursery provision in Marshfield and the surrounding area	5
Alternative Options Considered	6
What the proposal will achieve	7
Catchment area	7
Admissions	8
Transport	8
Staffing	8
Advantages/disadvantages	8
Risks	9
Fairness and Equality Impact Assessment	9
Consultation response pro-forma.	10

Introduction

The purpose of the consultation is to seek views on the proposal to establish nursery provision at Marshfield Primary School. It is your chance to ask questions and make comments that will be considered when the Council decides how to proceed.

Duration of the formal consultation period:

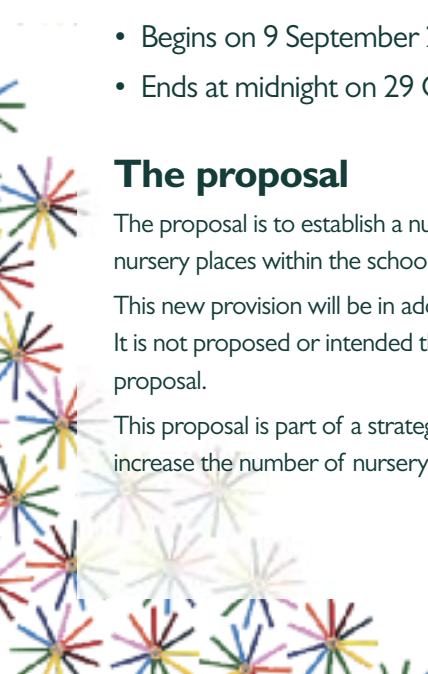
- Begins on 9 September 2015
- Ends at midnight on 29 October 2015

The proposal

The proposal is to establish a nursery at Marshfield Primary School, Marshfield Road, Newport, to provide 16 full time equivalent nursery places within the school setting.

This new provision will be in addition to the non-maintained provision currently provided on the Marshfield Primary School site. It is not proposed or intended that any current provision, maintained or non-maintained, would be adversely affected by this proposal.

This proposal is part of a strategy to realise a 3-11 vision for community maintained primary schools across Newport in order to increase the number of nursery places, and enable positive transition into statutory mainstream education.





What does the consultation process entail?

The consultation process represents an opportunity for people to learn about the proposal and to ask questions or make comments that will be recorded and summarised in a consultation report. This report will be published on the council’s website and will be considered when the council decides on the way forward.

Should the council decide to proceed with the proposal, a statutory notice will be published providing a 28 day period in which objections to the proposal may be lodged. This is known as the objection period.

Following the objection period, the council will consider the views expressed in response to the consultation and any objections received, before deciding whether to implement the proposal, amend the proposal or discontinue the proposal. At each stage, updates will be published on the council website.

The formal consultation process will include public consultation events at Marshfield Primary School where council officers will be on hand to explain the proposals in more detail and answer any questions.

How do you make your views known?

Comments and questions can be submitted using the enclosed response pro forma, by taking our online consultation survey hosted at www.newport.gov.uk or by writing or sending an e mail to:

Education Business Development Officer, Newport City Council, Civic Centre, Newport NP20 4UR.

E mail: school.reorg@newport.gov.uk

Please note that negative responses made during the consultation period will not be counted as objections to the proposal, but recorded as adverse comments. Objections to a proposal can only be registered during the objection period, following the publication of a statutory notice.

The following consultation events have been arranged. You are welcome to attend and meet council officers face-to-face to discuss the proposal.

Venue	Date/Time	Event type
Marshfield Primary School	11 September 2015; 3.30 – 5.30pm	Drop-in event
Marshfield Primary School	14 September 2015 09.00-11.00am	Drop-in event

Arrangements for the participation of children and young people

A ‘Children’s Consultation Questionnaire’ has been produced and is available from Marshfield Primary School or from Newport City Council.

Newport City Council will consult with the pupils of Marshfield Primary School through the school council, and children and young people are encouraged to attend a drop-in consultation session.

Copies of the ‘Children’s Consultation Questionnaire’ can be requested by e-mail: school.reorg@newport.gov.uk; or by telephone: 01633 235341

The deadline for consultation responses is midnight on 29th October 2015.



Who will we consult with?

- Teachers, staff and the governing body of Marshfield Primary School;
- Parents, carers and guardians of pupils attending Marshfield Primary School;
- Pupils attending Marshfield Primary School;
- Independent registered childcare providers in the area;
- Newport Early Years Development and Childcare Partnership;
- Cardiff City Council (as the neighbouring Local Authority);
- The Church in Wales and Roman Catholic Diocesan Authority for Gwent;
- The Welsh Ministers;
- Assembly Members (AMs) and Members of Parliament (MPs) representing the area served by Marshfield Primary School;
- Estyn;
- Teaching and staff trade unions representing teachers and staff of Marshfield Primary School;
- The South East Wales Education Achievement Service;
- Local Authority Transport departments;
- The Police and Crime Commissioner for Gwent;
- Community Councils of Marshfield, Coedkernew, Michaelstone y Fedw; Wentlooge
- The local Communities First partnership (or equivalent)

What do you have to consider?

The remainder of this document sets out the rationale for the proposal. We would like you to consider the information contained within the document and to hear your views as to whether or not you support the proposal.

The proposal

The proposal is to extend the age range at Marshfield Primary School, Marshfield Road, Newport from 4-11 years to 3-11 years in order to establish a nursery class to accommodate 16 full time equivalent places within the school setting.

This new provision will be in addition to the non-maintained provision currently operating within the grounds of Marshfield Primary school. It is not proposed or intended that this or any other current provision would cease or be adversely affected by this proposal.

This proposal is part of a strategy to realise a 3-11 vision for community maintained primary schools across Newport in order to increase the number of nursery places, and enable positive transition into statutory mainstream education.

The addition of a nursery class at Marshfield primary school will be enabled by the addition of a single classroom extension to the existing building.

When

It is proposed that the nursery will open in September 2016

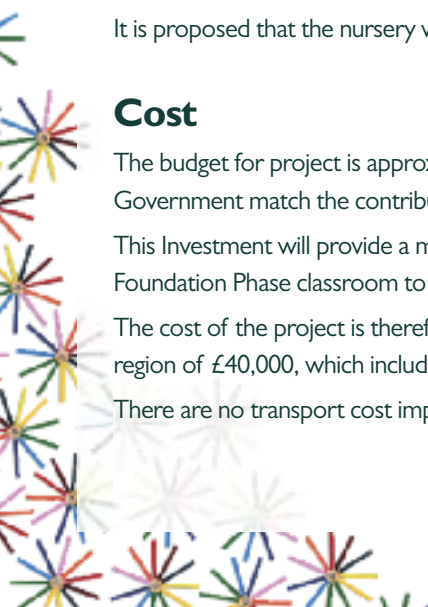
Cost

The budget for project is approximately £350,000 funded through the 21st Century Schools programme whereby Welsh Government match the contribution of the Local Authority.

This Investment will provide a modern new classroom in addition to the existing provision, which will enable one existing Foundation Phase classroom to be used for nursery provision.

The cost of the project is therefore £21,875 per pupil place. The annual revenue budget for the nursery class will be in the region of £40,000, which includes staffing costs.

There are no transport cost implications for this proposal.





About Marshfield Primary School

Marshfield Primary School is an English language community maintained school in the west of the city. The age range of the school is currently 4-11 years, and the school admits pupils to its Reception class in the September following their fourth birthday. The admission number for the school is 60, meaning that there are two classes of up to 30 pupils in each year group.

Approximately 20 per cent of pupils currently attending the school live outside of the school catchment area. The projections below indicate that demand for places at the school will exceed capacity from 2018. In schools where applications for places are in excess of the number of places available, the council will apply its oversubscription criteria to allocate places.

When the buildings were surveyed in 2010, the school was deemed to be in condition grade B (fair), on a scale of A-D.

The number of pupils on roll at the school since 2011, and projected pupil numbers up to 2020 are shown below.

Pupils on roll 2011-2015 (January PLASC)						
	Capacity	2011	2012	2013	2014	2015
No.on Roll	420	378	397	406	407	408

Projected pupil numbers 2016-2020						
	Capacity	2016	2017	2018	2019	2020
No.on Roll	420	409	410	420	433	434
Projection year 2015; projections do not include new housing developments						

Quality and standards in schools in Newport are monitored by Estyn and the Local Authority. Estyn is the office of Her Majesty's Chief Inspector of Education and Training in Wales. Inspection reports are available at www.estyn.gov.wales

The school was last inspected by Estyn in March 2011. The outcomes of that inspection are shown below.

Estyn Inspection Outcomes, Marshfield Primary School, March 2011.				
How good are outcomes?	How good is provision?	How good are leadership and management	Current performance	Prospects for Improvement
Good	Good	Good	Good	Good

The school has been above the median in its Free School Meals (FSM) benchmarking group for the last three years in both pupils achieving the Foundation Phase expected outcome (age 7), and those achieving the expected level - Core Subject Indicator at Key Stage 2 (age 11).

The South East Wales Education Achievement Service has placed the school in the yellow colour coded support category (in the range green, yellow, amber, red). This indicates that the school is considered an effective school that knows where and how it should improve.

Attendance at the school is slightly below the FSM group median at 95.9% (2014).

The council believes that the proposal will have a positive impact on the quality of education outcomes and provision in the area. The addition of a nursery class will provide quality early years education and improve learner transition, through effective curriculum continuity in the foundation phase and into key stage two.



List of facilities/ build proposal

The new extension will provide:

- One classroom suitable for 30 Key Stage 2 pupils
- Girls and boys toilets
- Store cupboard
- Link corridor to main building

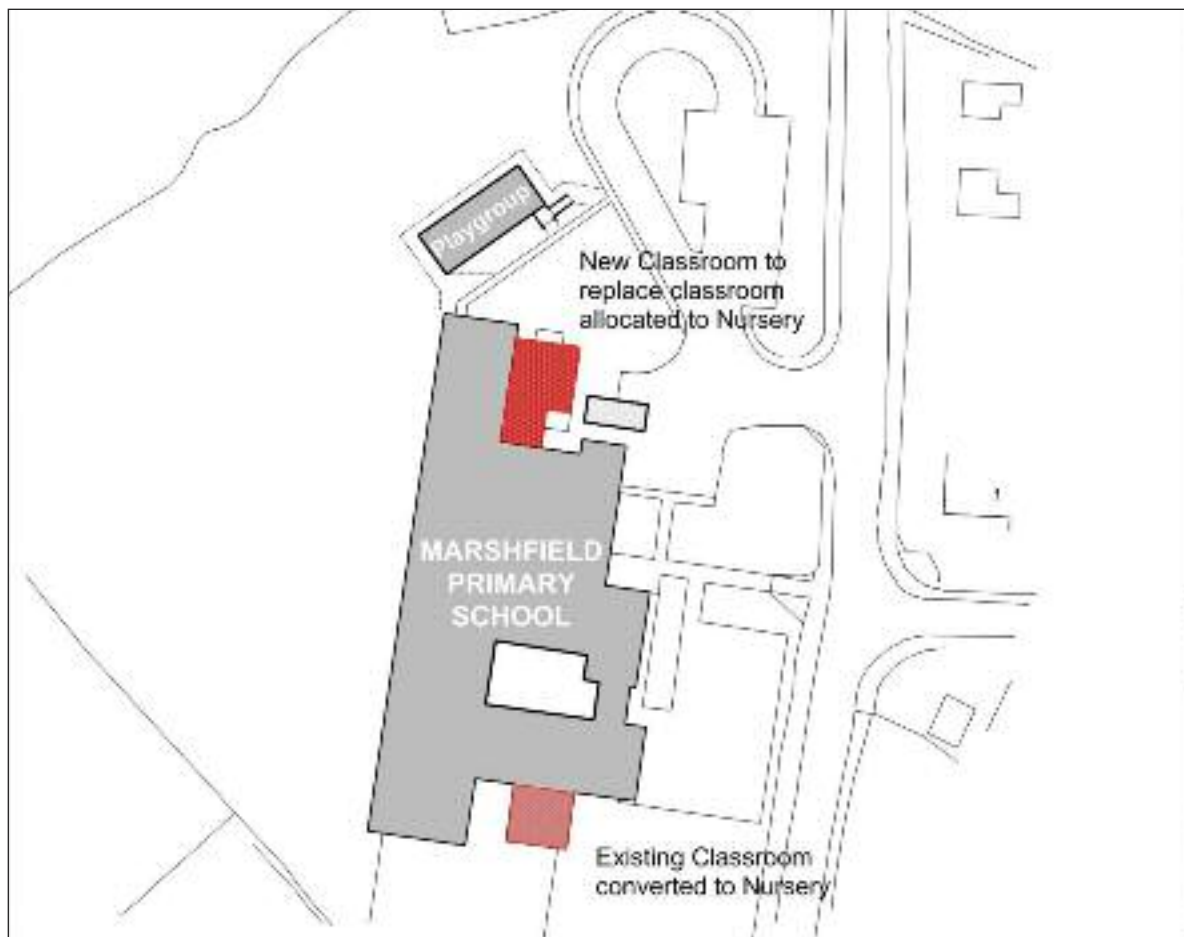
Remodelling work to an existing classroom will be undertaken to make it suitable for nursery provision which will include:

- Toilets
- Cloakroom

External works will provide:

- Fencing to enclose a direct access nursery playspace
- Additional car parking spaces

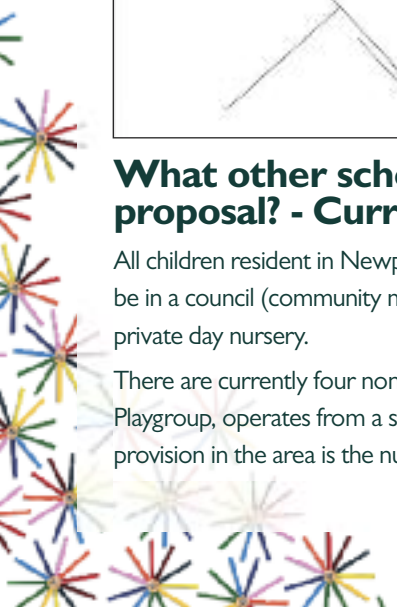
Fig.1 – indicative site plan



What other schools or childcare providers might be affected by this proposal? - Current nursery provision in the area

All children resident in Newport are entitled to a free part-time nursery place in the term after their third birthday. This place can be in a council (community maintained) nursery school/class or in a non-maintained setting which may be a playgroup or a private day nursery.

There are currently four non-maintained English language Early Years providers in the Marshfield area. One of these, Castleton Playgroup, operates from a stand-alone building on the Marshfield Primary School site. The only community maintained provision in the area is the nursery at Duffryn Infant School. Details of the providers in the area are shown below.





Early Years/non-maintained settings in Marshfield and surrounding area				
Provider	Location	Age range	Number of LA funded children	Morning/ Afternoon or full day sessions
Castleton Playgroup*	Marshfield Primary School	2.5-5yrs	57	AM +PM term time only
Acorns nursery+	ONS, Cardiff Road	0-5yrs	15	Full day
Celtic Springs nursery	Celtic Springs Business Park	0-5yrs	43	Full day
Sunflower Tots	Forest Children's Centre, Duffryn	3-5yrs	24	AM + PM term time only
*There is a waiting list for admission to this provision +Provision for children of ONS employees only				

Due to the high level of demand for pre-school and childcare places in the Marshfield area, Castleton Playgroup can only accommodate all of the children in the catchment of Marshfield Primary school by offering a combination of three or four sessions per week. If the proposal for the creation of the nursery class within Marshfield Primary School is realised, this will give additional choice for parents who may require five part time sessions per week for their children.

Standards

Recent Estyn inspection outcomes for non-maintained nursery providers in the Marshfield area are shown in the table below.

Provider	Inspection date	How Good are Outcomes	How Good is Provision	How Good are Leadership & Management	Performance	Prospects for Improvement
Castleton Playgroup	Dec-12	Good	Good	Good	Good	Good
Acorns	Mar-11	Good	Good	Good	Good	Good
Celtic Springs nursery	Nov-14	Good	Good	Good	Good	Good
Sunflower Tots	Jun-11	Good	Good	Good	Good	Good

Alternative Options considered

Do nothing –

Marshfield Primary School would remain as a 4-11 age primary school with limited nursery places being provided in non-maintained settings as detailed above. Children would then start school in Reception class of Marshfield Primary School in the September following their fourth birthday.

Some parents in the local area will continue to have to wait for nursery places at Castleton Playgroup and not be able to take up the full entitlement of up to five sessions per week when their child reaches eligible age.

Alternative location –

The neighbouring school, Duffryn Infant School already provides nursery places, as does Maesglas Primary School. The intention of the proposal is to bring nursery provision into a school setting, to increase the amount of nursery places in the area and to improve transition into statutory education. For this reason the possibility of establishing nursery provision at an alternative site is not favoured.

Preferred Option -

The preferred option is the proposal to extend the age range of Marshfield Primary School to 3-11 years. The addition of one classroom will enable the school to offer funded nursery provision within the primary school environment.



What will the proposal achieve?

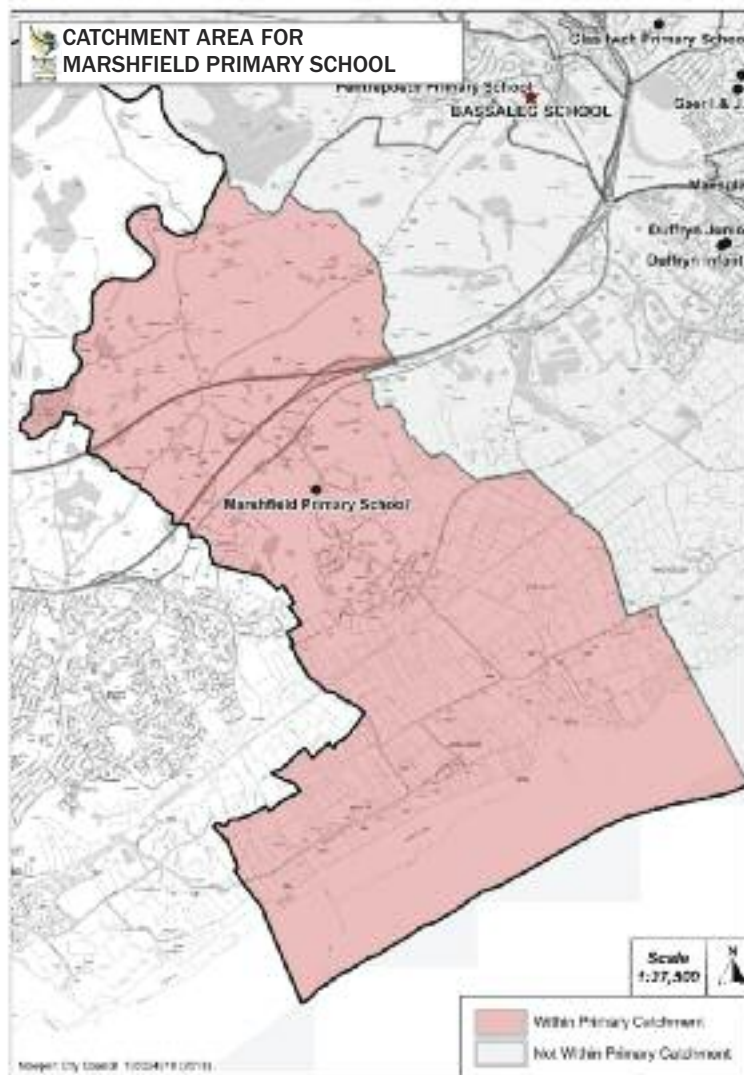
The proposal will provide 16 full time equivalent (FTE) additional nursery places in the Marshfield area within a well-established and successful primary school setting. The proposal will also expand the number of free, part time education places available for children in the term following their third birthday. This will enable a smooth and effective transition into statutory education for children moving to Reception class as well as enabling an effective, affordable and accessible model for wrap around childcare with Castleton Playgroup providing childcare sessions either before or after the education session. It is anticipated that this will have a positive effect on the social and educational experiences of children in the area and allow additional flexibility for working parents or those requiring additional hours over and above that which is currently provided.

Catchment area

Any parent will be able to apply for a place in the nursery at Marshfield Primary School, but priority will be given to families living within the catchment area.

The catchment area for the school is shown shaded pink below.

Fig.2 – Marshfield School catchment area



Admissions

Newport City Council will be the admissions authority for the school and the nursery. Information on how to apply for nursery places can be found on the council website at www.newport.gov.uk/nurseryplaces

All children resident in Newport are entitled to a free part-time education place in the term after their third birthday. This place can be in a council nursery school/class or in a non-maintained setting, which may be a playgroup or a private day nursery. The council does not deal with applications to registered education provider settings, and enquiries regarding these should be made directly to the provider in the first instance.

The council actively discourages the practice of parents registering their child's name at a specific school often sometime in advance of the application timetable. There is no role for Headteachers in the allocation of nursery places as this is the sole responsibility of the council. In schools where nursery applications are in excess of the number of places available, the council will apply its oversubscription criteria to allocate places. Admission to nursery schools and classes is for a 'half-day' session, either morning or afternoon, five days per week.

The allocation to morning or afternoon sessions is the responsibility of the Headteacher of the relevant school. The council is unable to consider applications for only part of a school week.

Transport

Free home to school transport is provided to primary aged pupils who live more than two miles from their catchment school or nearest available school. Funded transport is not provided for nursery age children.

Staffing

The new nursery provision will create additional employment opportunities for one teacher and one teaching assistant.

Advantages/disadvantages

The advantages of this proposal are:

- Additional funded nursery places in the area
- Helps to meet demand for places
- Safe and reliable educational setting
- Introduces children to the school environment from 3 years of age
- Improved transition into school
- Well established leadership team
- Provision of affordable and accessible wrap around childcare
- Additional choice for parents regarding where their child accesses their early years entitlement in the term following their 3rd birthday
- Additional sessions offered to Rising 3's than can be offered currently



The disadvantages of this proposal are:

- The school does not currently have capacity for an extra class, so one has to be built
- The new classroom will take up part of the existing outdoor space
- There is likely to be a small increase in traffic to and from the site

The risks associated with this proposal, and mitigating factors are shown below:

Risk	Mitigating factor
The new provision could have an adverse effect on numbers attending non-maintained nursery settings	Castleton Playgroup is over-subscribed and operates a waiting list. It is not thought that additional provision will undermine the viability of other providers
Demand is not high enough to fill the nursery	This is unlikely as there is a shortage of provision in the area
Traffic problems associated with drop-off/pick up	The impact of this could be reduced through staggered start/finish times, to fit around the school and Castleton playgroup.

Impact assessment

A fairness and equalities impact assessment has been conducted for this proposal and is available on the council website.

The proposal will have a positive impact upon fairness, equality and access to services in the Marshfield area.





Consultation Response Pro-Forma

- Addition of nursery provision at Marshfield Primary School

Your views matter. Please tell us what you think about the proposal by completing this questionnaire and returning it to:

Education Business Development Officer,
Newport City Council, Room 425W, Civic Centre, Newport NP20 4UR

Or you can complete and submit this form online through the council website:

www.newport.gov.uk/have_your_say

The closing date for the submission of responses to this consultation is:

Midnight, October 29 2015.

Please note that negative responses made to this consultation will not be counted as objections to the proposal, they will be recorded as adverse comments. Objections can only be registered following the publication of a statutory notice.

Do you support the proposal to establish a new nursery at Marshfield Primary School?

Yes

No

Please use the box below to give any reasons or comments (including alternative options).

Please indicate who you are (e.g. parent/carer of a pupil at an affected school)

If you wish to be notified of the publication of the consultation report, please supply your contact details:

e-mail: _____

Postal address: _____



CUT OR TEAR ALONG DOTTED LINE



