

A review of the Local Development Plan

January 2021



**easy
read**

Contents

Page



Introduction

3



Reviewing the local development plan

5



Changes to the plan

8



10 things we should do

11



How we use our land

13



Local development policies

15



Planning for the future

19



For more information

22

Introduction



Newport City Council has to write a **local development plan**.

A **local development plan** is the Council's plan for things like:

- how land should be used in the city
- what roads, paths and cycle ways there should be
- parks and green spaces
- space for business and work
- building new places for people to live
- how to manage flood risk.





Every year, the council has to look at the plan.

But we can only make changes to the plan during a review, which is usually every 4 years.



The next plan covers the period 2021 to 2036.



This is a review of the old plan. It will help us think about what we need in the next plan.



We want to know what you think about this review.



If you have any comments or suggestions please send them to us by email at:
ldp.consultation@newport.gov.uk

Reviewing the local development plan



We need to update the old plan from 2015.



The old plan set out what we wanted to achieve and what we will do to make it happen.

But things have changed since we wrote the old plan, so we need to make sure we are still doing the rights things.



We also need to think about how the plan affects other things, like:

- people who live and work in Newport
- businesses and jobs
- the environment.





Housing

In Newport we have built nearly 6000 homes since early 2015.



We have built almost all the **affordable homes** that we said we would build.

Affordable homes are for people who need help to afford to buy or rent a home.



We know that a lot of people want new homes in Newport. So we need to plan to build more new homes in the coming years.

Gypsy and Traveller site

We have provided a site for people from the gypsy and travelling community, but need to provide a **transit site**.

A **transit site** is a temporary place for travellers to stay for a short time.



Land for businesses

We have set aside land that can be used for businesses to grow and create new jobs.





Shops in the city centre

We have built the new Friars Walk Shopping Centre.

We need to update our vision for the city centre.



Flooding

We have to be ready in case of floods.



Newport is close to the Severn Estuary. The River Usk flows through the city. Both of these could lead to flooding.



We need to look at the risk of flooding in any areas that are being used for new buildings.

Changes to the plan



Since we wrote the last plan, lots of things have changed. We need to think about how these changes affect our plans for the future.



Changes to the law

There have been lots of changes to law and Government rules. We need to make sure the new plan fits these changes.



Wellbeing

We now know that the space around us affects our mental health and **wellbeing**.



Wellbeing is having good mental health and feeling good about yourself.



The space around us includes buildings, roads and green spaces.



Health

We can plan our buildings, roads and green spaces in a way that helps people to become healthy.



Climate change

Climate change is the weather changing around the world because of **pollution**.



Pollution is dirty chemicals in the air that harms the space around us.

Climate change is leading to worse storms and flooding.



Fewer people are shopping in the city centre

Many shops in the city centre are doing well, but many people prefer to:

- use local shops
- buy things online.

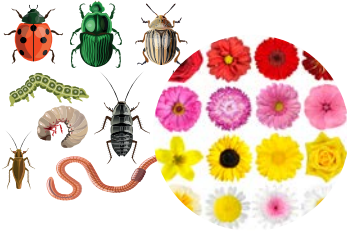


This is affecting our plans for the city centre.



Wildlife

Wildlife is important to Newport and beyond.



We need to protect our wildlife and the many different types of creatures and plants.

10 things we should do



The Council has been looking at how the city should grow in the future.



We have said that there are 10 main things we should do:

1. Use our land in a way that will be good for our planet and local areas for a long time.

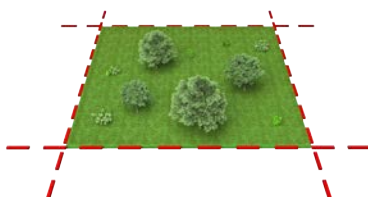


2. We must make changes so:

- we don't make as much of the pollution that is causing climate change
- we are ready for worse storms and flooding.



3. Help businesses to grow and create more jobs.



4. Make sure there is enough land to build the new homes that people need.



5. Look after our historical old buildings.



6. Protect nature and wildlife.



7. Have good facilities for local areas. These may be sport and leisure centres, community centres, libraries, museums, arts and music venues.



8. Make sure places are accessible to everyone.



9. Help people stay healthy, live a healthy lifestyle and feel good about themselves.



10. Make sure we get rid of our waste in ways that are good for the planet.

How we use our land



When we plan new buildings, we should use **brownfield sites** rather than **greenfield sites**.



A **brownfield site** is land that has been used before, where the buildings have been pulled down.

A **greenfield site** is land that looks like it has never been built on.



We should:

- continue to build new homes where the Llanwern Steelworks used to be and around Llanwern Village



- protect the City Centre and encourage new businesses



- protect the countryside areas around the edge of Newport



- protect green spaces and encourage wildflowers and wildlife



- help the city grow as an important part of Wales



- make the most of our sports facilities.

Local development policies



A **policy** is a set of rules about how we do things.

These are the most important policies in this Local Development Plan review:

Climate change

We want to tackle climate change by:

- reducing pollution
- managing flood risk
- building new things that will be good for the planet for a long time.



Flood risk

We want to build fewer homes and businesses in places that might be flooded.





Making electricity

In the past, electricity has been made by burning coal or oil.



We want to change how we make electricity using renewable methods, like **solar panels** and **wind farms**.



Solar panels turn sunlight into electricity.

Wind farms are where lots of windmills create electricity from the wind.



Health

We plan to look at how buildings and roads affect people's health.



Buildings and roads affect:

- whether people take exercise
- pollution in the air which makes it difficult to breathe
- disabled people and people with mental health issues.





Green space

Green spaces are important for wildlife, like butterflies, birds, insects and beetles.



Green spaces are also important for people's wellbeing, leisure and exercise.



We will look at how we can improve the green spaces in the city.



Historic places

Our policy to protect historic buildings and places is working well.



Wildlife

Newport has important areas for wildlife. They can be a base for wildlife over a large area of Wales or Europe.



There are strict rules to protect wildlife.



Housing

We said we would build about 10,000 new homes between 2011 and 2026.



So far we have built about 6,000.



Transport

We need to help people to get around in a way that is good for their health and the planet.



This means we should make it easier for people to walk and cycle around the city.

Planning for the future



The Council is going to look at these issues that will help our plans to be right for the future:



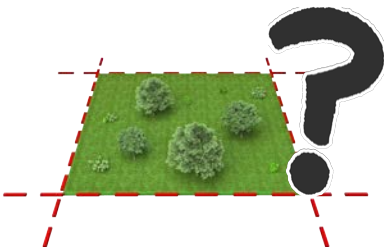
- how will the number of people in Newport grow in the future?



- how many new homes will be needed in the future?



- how many affordable homes will we need?



- what land can we use for businesses to create new jobs?



- what sites do we need for people from the gypsy and traveller communities?



- how do we protect ourselves from future flooding?



- what shops and leisure facilities will people need in the future?



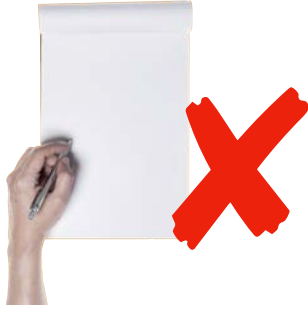
- how can we look after our green spaces better?



- how can we make sure we have enough electricity from renewable methods?



- how can we look after the countryside areas of Newport?



Working with other local councils

We don't think we should write a plan with another council, because we have too many differences.



But we are planning to work with other councils on some issues, which we do share.



Type of review

When the plan is updated we think it should be reviewed in full, not just some parts of it.



Do you agree?



Are we missing anything?

Is there anything else we should think about when we write our new plan for Newport?

For more information

If you need more information please contact us by:



Email:
ldp.consultation@newport.gov.uk

Website: **www.newport.gov.uk/ldp**



Phone: **(01633) 656 656**



Post:
**Newport City Council
Civic Centre
Godfrey Road
Newport
South Wales
NP20 4UR**